

**Global Motion Technology Inc (www.motiontek.ca)**

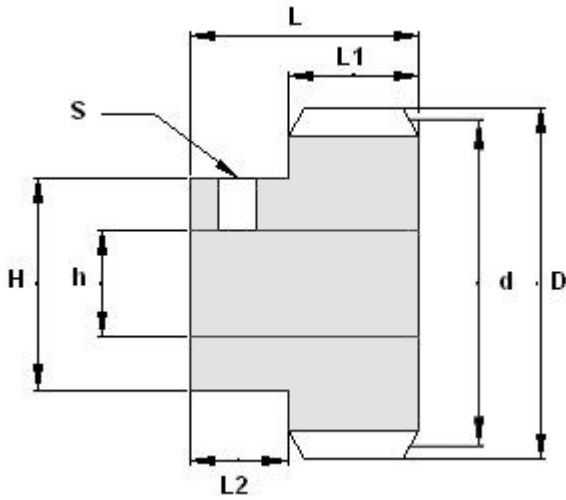
Pinion/Gear catalog no. CN-GR01

Material 1045 Steel

Pressure angle 20°

All pinions come with one set screw (S)

All measurement are in metric mm, each inch = 25.4 mm



| Type      | Module | No of Teeth | L  | L1 | L2 | D  | d  | H  | h    | S  |
|-----------|--------|-------------|----|----|----|----|----|----|------|----|
| GRS1.0-20 | 1.0    | 20          | 25 | 15 | 10 | 22 | 20 | 16 | 6.35 | M5 |
| GRS1.0-26 | 1.0    | 26          | 25 | 15 | 10 | 28 | 26 | 20 | 6.35 | M5 |
| GRS1.5-20 | 1.5    | 20          | 27 | 15 | 12 | 33 | 30 | 25 | 8    | M5 |
| GRS1.5-26 | 1.5    | 26          | 27 | 15 | 12 | 42 | 39 | 32 | 8    | M5 |